

*Expertise - Quality - Service*



**ASAUTOMECH**  
SOLUTIONS



# Steel

fabrication & turnkey projects

**ASAutoMech Solutions (PTY) Ltd.**

Reg Nr. 2002/007472/07

161 Clydesdale Rd., Daggafontein Ext,  
Springs, South Africa, 1564

☎ +27 11 363 0534/5/6

@ info@asautosol.co.za

📍 S 26° 17' 42.0" E 28° 28' 29.8"



[www.asautomech.co.za](http://www.asautomech.co.za)



Applying the highest standards of Engineering through...

***EXPERTISE, QUALITY & SERVICE***





# Steel fabrication & turnkey projects

Small to medium production projects

We engineer and develop equipment and systems for

## **INDUSTRIAL SOLUTIONS**

in the Advanced Water Treatment, Mining Reagent Systems, and Food Processing Industries





# Your Project Partner

We are in a position to offer all the fundamental requirements for a successful project. From a Conceptual idea, transferred and re-worked through Drafting and Modelling, fine tuned in the HAZOP and P&ID Review phases, and finally becoming a reality in our well Managed and equipped Mechanical and Electrical Workshops. Well-fabricated products with internal Quality Control Systems and Plans are in place.

*Expertise - Quality - Service*

Fabrication in Stainless, Special Steel and Mild steel as individual disciplines or combined ranging from plate work right through to piping in small and medium bore offering a complete mechanical package. All forms of corrosion protection is applied like Pickle and Passivation on Stainless multi pack Epoxy coatings as per customer requirement.







*Expertise - Quality - Service*





[www.asautomech.co.za](http://www.asautomech.co.za)



# Project Management & Services

As registered partners with Siemens and Rockwell Automation, adding all Instrumentation and Electrical Panels with the necessary PLC, HMI and SCADA's offerings as required completes our service.

Projects are well-managed and tracked using Project Management schedules and programs. Packages is then completed with comprehensive Documentation and Data-packs in various formats as required by the end user accompanied by on-site assistance and training as required.

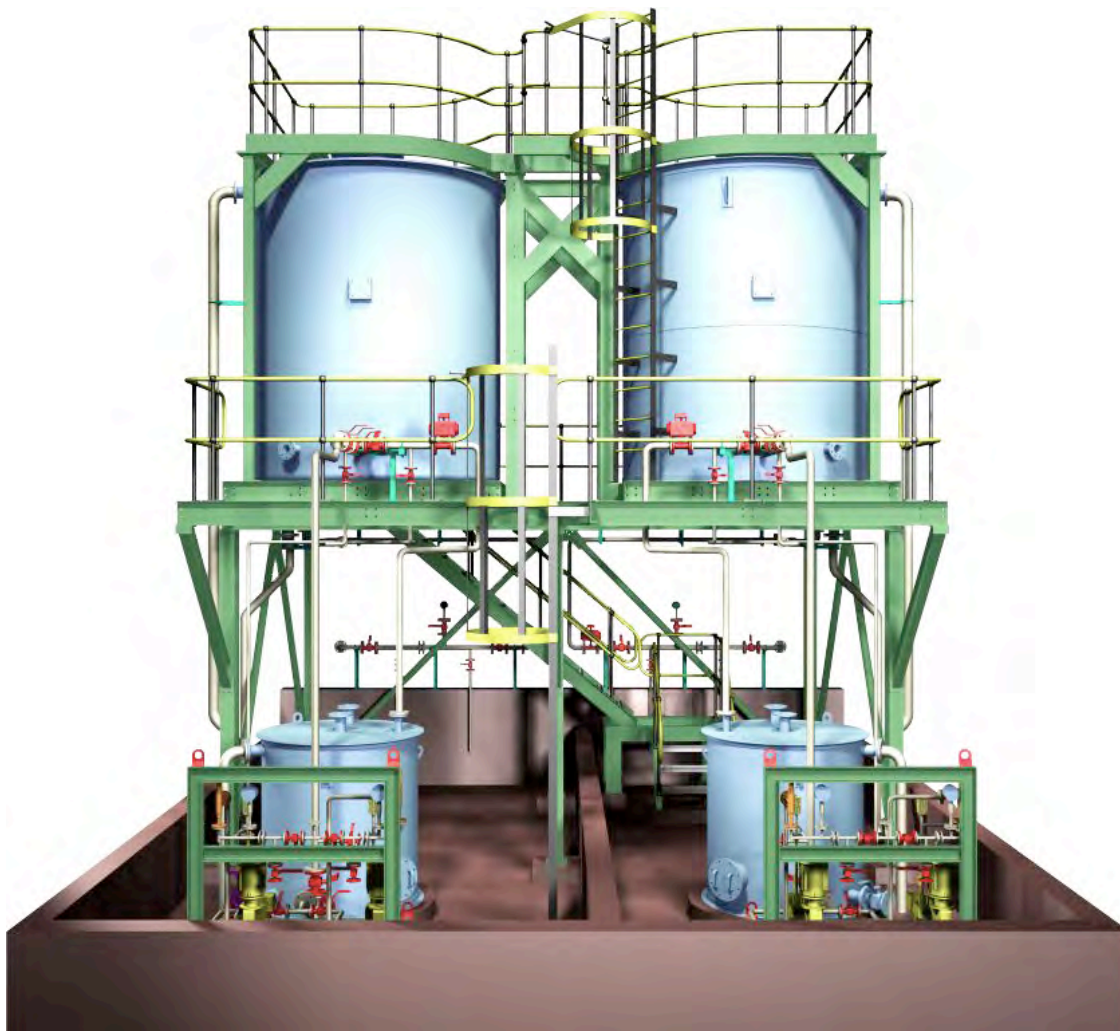


The footprint of AS Automation in various sectors like Food & Beverage, Mining, Chemical, Water Treatment and Water Preparation gives us the ability to be flexible and adaptive.

Please consult our reference list of current and completed projects, giving some insight to our capabilities, primary customers and field of exposure.

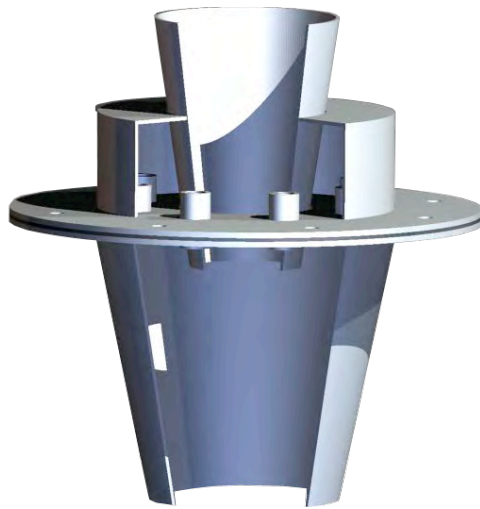


## Steel Manufacture & Turnkey Projects



*Expertise - Quality - Service*







**ASAUTOMECH**  
SOLUTIONS

**ASAutoMech Solutions (PTY) Ltd.**

Reg Nr. 2002/007472/07

161 Clydesdale Rd., Daggafontein Ext,  
Springs, South Africa, 1564

☎ +27 11 363 0534/5/6

@ info@asautomech.co.za

📍 S 26° 17' 42.0" E 28° 28' 29.8"

*Expertise - Quality - Service*



[www.asautomech.co.za](http://www.asautomech.co.za)